



PressPage

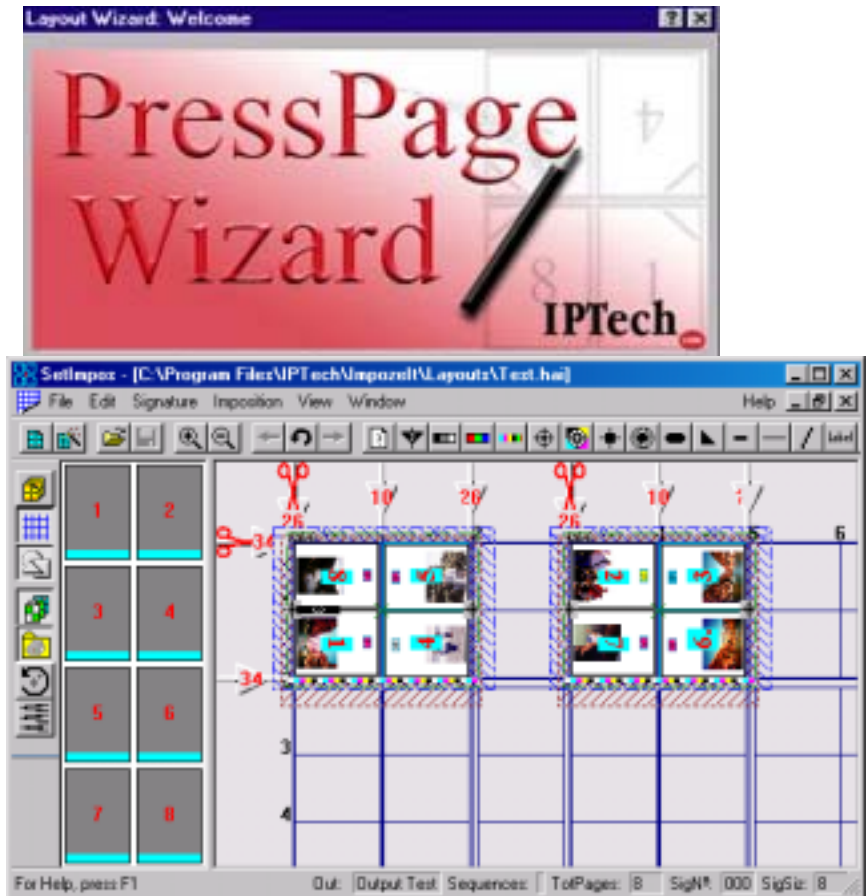
PDF Imposition Workflow

Professional PDF Imposition

PressPage® replaces the expensive and time-consuming process of manual stripping with the precision and speed of digital page imposition. Offering true PDF workflow, it processes files created from any application and integrates seamlessly with your current PostScript™ environment. PressPage meets the special needs of any job regardless of origin, type, platform or format. It directs you step by step with its intuitive Wizard interface, a feature not found in any other imposition application. Additionally PressPage is fully automated to perform impositions without the need of an operator.

5 Key PressPage Modules

- **IMS** (PressPage Management Service) prepares each incoming job for processing by the AutoImpos server.
- **AutoImpos** (imposition server) transforms the incoming PDF file into an imposed PDF file, according to the parameters in the layout file. The layout file contains all of the specifications needed to process the job.
- **SetImpos** (PressPage client) generates the layout files used by AutoImpos, and communicates information regarding job status.
- **PressPage Print Processor** automatically directs jobs submitted via a Windows NT printer to the IMS.
- **Message Monitor** records all of the information coming from the IMS and from AutoImpos.



PressPage 2.0 has a new look to its Graphical User Interface. Shown is the new, intuitive SetImpos workspace. Rich in features, its ease of use makes PressPage the natural choice of prepress professionals.



PressPage

Easy to Configure

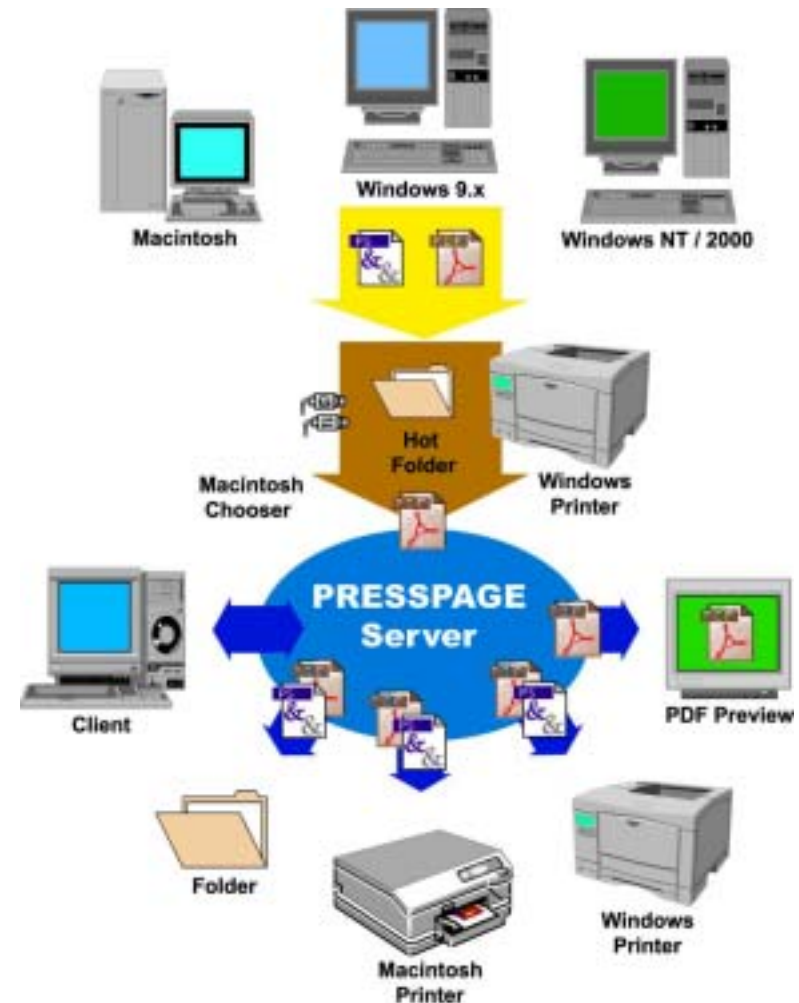
Using the PressPage Wizard, you have control over each signature. Choose from many standardized templates, modify existing templates, or create your own customized or step-and-repeat signatures. You can send files from client machines or from your Windows NT® or Windows 2000® server, and easily output to file or any imagesetter, digital press or laser printer on your network.

PDF Imposition

Harnessing the power of Adobe's Portable Document format (PDF), PressPage processes files created from any application or platform. PostScript® files are automatically converted to PDF, allowing files of mixed origin to be easily assembled together and made instantly available for screen proofing and test editing. Jobs are sent to the user-specified output device on a flat-by-flat basis, incorporating time/date stamps and converting PDF to PostScript on output, when necessary.

General Features

- Automated workflow for handling PostScript and PDF jobs.
- Supports PostScript 3 output.
- Supports Xobjects.
- Supports folio pages.
- Compatible with PDF 1.2, 1.3 1.4 or 1.5.
- Compatible with Windows NT Windows 2000 Server, Windows 2003 Server
- Uses client/server configuration.
- Supports drag-and-drop functionality.
- Supports PC/Macintosh hybrid environments.
- Compatible with PostScript and PDF mainstream RIPs.
- Application independent, and requires no PPDs or filters.
- Facilitates server workflow setup with Java runtime utility.
- Fast Native PDF imposition.



PressPage's client/server architecture accommodates cross-platform print production environments, and enables both Windows and Apple® Macintosh® clients to easily submit files for imposition.

