

CanOPI

Professional OPI for Windows NT, 2000 & XP

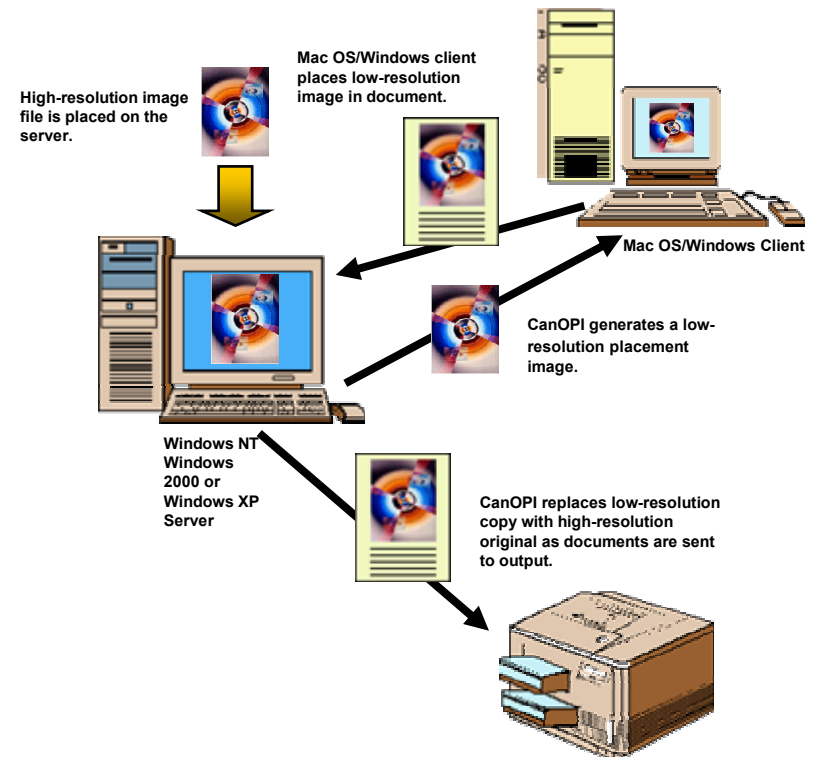
Reduce Network Traffic, Increase Productivity

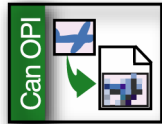
CanOPI® is an integrated Open Prepress Interface (OPI) software solution for the publishing industry. CanOPI takes full advantage of distributed client/server networks and eliminates the need to manipulate large, high-resolution image files. Users store a central archive of JPEG, EPS, DCS, TIFF, and Scitex images on a Windows NT®, 2000® or XP™ file server, from which CanOPI automatically generates low-resolution files for page layout work. Users then work with these corresponding low-resolution, For-Position-Only (FPO) files, in their documents. At print time, the high-resolution image replaces the FPO image, while retaining all design adjustments made to the FPO. CanOPI quickly frees client workstations for further work and provides a dramatic reduction in network traffic, therefore increasing the productivity of your prepress workflow.

Easy to Install and Configure

Installation and configuration of CanOPI is a snap using the CanOPI Installation Wizard and the Windows NT Administration Wizards which guide you through the process. By following the steps on the screen, you can create Mac OS®-accessible folders, set access privileges, and configure OPI printers. Additionally, CanOPI's user-friendly interface utility provides a single location from which users can define FPO Sample Generation, Picture Replacement, Job Spooling parameters, and more.

- Generates Web-ready JPEG.
- Create PC EPS files with embedded TIFF preview from PDF files.
- Maintains ICC color profile information when generating low-resolution TIFF FPO's.
- Generates printable preview data from Adobe® Illustrator® EPS files.

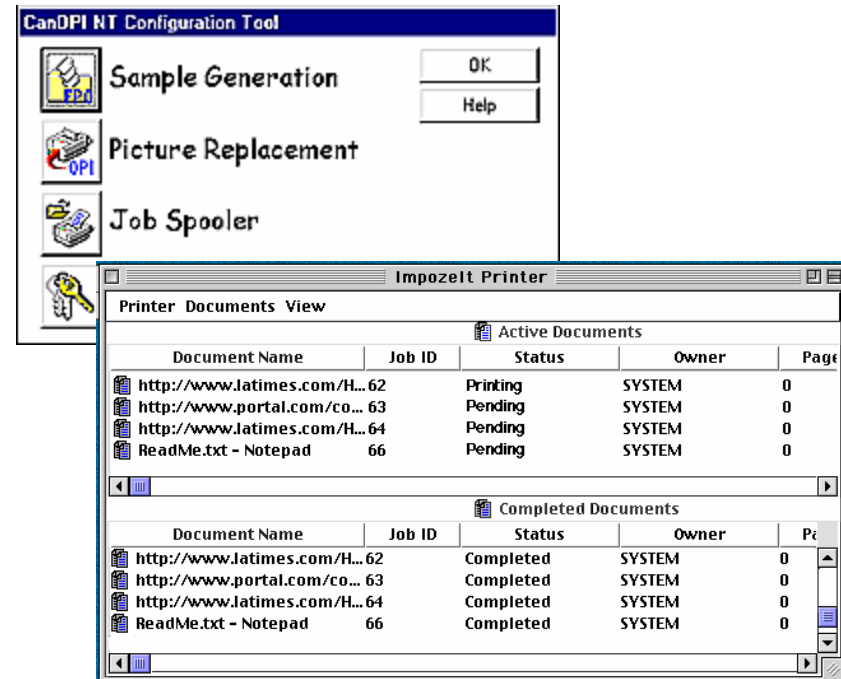




CanOPI

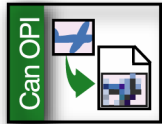
Sample Generation Options

- Generates Web-ready JPEG files from TIFF, Handshake CT, Handshake LW, JPEG and Photoshop Native high-resolution files. For Web-ready JPEG images, Sample Generation automatically converts CMYK data to RGB, and bitmap data to grayscale. CanOPI also creates JPEGs from Photoshop EPS, and Illustrator EPS with thumbnails.
- Generates JPEG thumbnails at user-defined dimensions for asset-management systems from TIFF, Handshake CT, Handshake LW, JPEG, Photoshop Native, Photoshop EPS/DCS, and Illustrator EPS with Thumbnail preview data.
- Maintains ICC color profile information when generating low-resolution TIFF FPO files from Photoshop™ high-resolution TIFF files, or EPS/DCS FPO's from EPS/DCS high-resolution files.
- Generates printable preview data from Adobe Illustrator 7.0/8.0/9.0 EPS files, when saved with the "Include Document Thumbnails" option.
- An additional Acrobat plug-in enables the creation of PC EPS files with an embedded TIFF preview from PDF files. Once an EPSF is generated from the PDF, an FPO is automatically generated.
- The "Store Folder" of the HotFolder Sample Generation configuration now functions like an InPlace event-driven configuration. Rename, delete, and save events are automatically tracked and processed, eliminating the need to resave edited images back into the Input folder to force FPO updates.
- The "Rescan Now" option enables administrators to rescan complete InPlace and HotFolder volumes to ensure that all high-resolution images have associated up-to-date low-resolution sample files.
- Supports additional CCITT compression types.
- Automatically deletes samples when high-resolution images are deleted.



Advanced Print Queue Management

Administer server print queues through the familiar Windows NT, Print Manger or control them from any platform, either remotely or locally, with IPtech's optional PrintQMgr™. PrintQMgr incorporates a user-friendly Java™ -based graphical user interface that can be accessed by any Mac OS, Windows® 95/98/2000, Windows NT®, or Unix® user. With PrintQMgr, you can view, pause, resume, delete, rearrange, resubmit, and transfer jobs within or between print queues.



CanOPI

Professional OPI for Windows NT, 2000 & XP

Picture Replacement Options

- Now supports the merging of pre-separated 1-bit CopyDot TIFF files for composite printing.
- An “RGB Image” option enables the user to report a warning or abort the job if an RGB TIFF, Scitex CT, Scitex LW or JPEG image is encountered during picture replacement.
- Automatic replacement of FPO samples with high-resolution images for fast production and print spooling.
- Recursive option automatically parses included images for further OPI comments.
- On-the-fly separation of Photoshop CMYK EPS files during picture replacement decreases network traffic and increases RIP performance.
- Automatically searches for missing images in user-configurable recursive search paths.

New Enhancements to CanOPI 3.1

- A new Message Monitor application displays events from Picture Replacement, Sample Generation, and Job Spoolers services. Its record-based user interface facilitates the filtering and viewing of events.
- Provides improved support for simultaneous processing (multi-threading).
- Now compatible with Microsoft clustering.

System Requirements for CanOPI

- Pentium II, III or 4 Series Processor.
- 256 MB of RAM.
- 4 GB HDD or larger.
- Windows NT Server 4.0 with Service Pack 5 or later, Windows 2000 Server or Windows XP.
- Windows NT Services for Macintosh.

System Requirements for PrintQMgr

- Macintosh running MacOS 7.6.1 or higher.
- PC running Windows 95/98/2000 or Windows NT 4.0 Server or Higher
- 32 MB RAM.
- 30 MB available HDD space.
- Network Interface Card 10/100BaseT or compatible.
- TCP/IP network.

IPTech
Information Presentation Technologies, Inc. 

825 Buckley Road, Suite 200

San Luis Obispo, CA 93401

Tel: 805-541-3000

Fax: 805-541-3037

E-mail: info@iptech.com

Web: www.iptech.com

